A hand-drawn mind map on a light-colored surface. The central node is 'goal setting' written in a large, cursive font. Arrows radiate from this central node to various other nodes: 'purpose', 'life', 'health', 'goals', 'relationship', 'contribution', 'career', 'self-growth', 'business', 'reflections', 'benefits', 'decision making', 'personal & benefits', 'ready', 'plastic', 'moments', and 'REACH ONE'. A pen is visible in the upper right corner, pointing towards the center of the map.

**PORT JERVIS CITY SCHOOL DISTRICT**

**2017-2018**

**GOALS**

# Address Needs of Aging Middle School and Central Administration Office

- Review work of previous committees
- Hire independent architect
- Hire independent consultant
- Video conference with NYSED Facilities Planning
- Share draft plan with Board of Education
- Revise plan
- Present plan to Board of Education and taxpayers

# Curriculum Mapping

- Identify Curriculum Mapping software platform
- Professional Development
- Shared Decision Making
  - Identify most immediate curriculum needs
  - Strategic Planning
- Sustained Support

# Instructional Technology Initiative

Hardware and Infrastructure

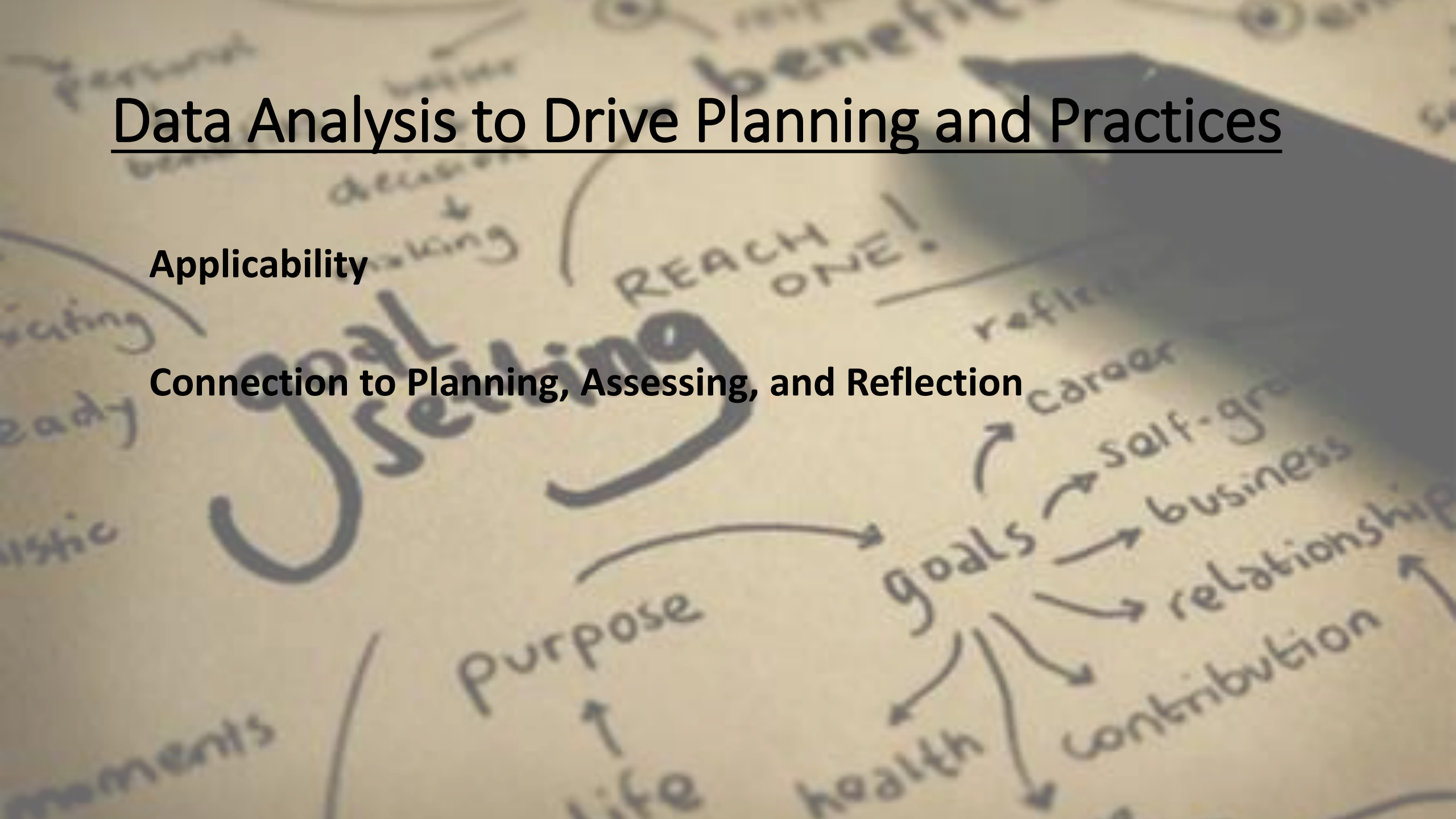
Training / Professional Development



# Data Analysis to Drive Planning and Practices

**Applicability**

**Connection to Planning, Assessing, and Reflection**



# Maintain Fiscal Stability

- **Include all stakeholders in budget preparation**
- **Prepare budget based on best instructional practices**
  - **Review district-wide staffing**
  - **Review C-Tech need**
  - **Review ARCH program**
    - **Consider more comprehensive high school credit recovery program**
  - **Review/revise Summer School program**
  - **Review Computer Information Technology initiatives**
  - **Consider other educational initiatives/opportunities**